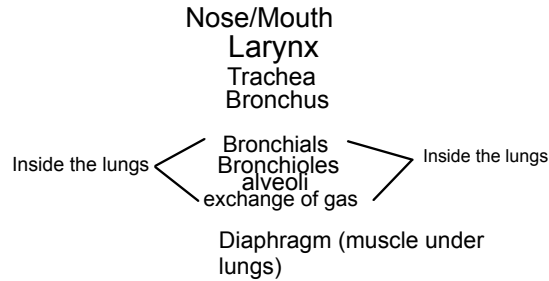


## Respiratory System

A system that is in charge of taking in mostly oxygen ( $O_2$ ) and getting rid of carbon dioxide ( $CO_2$ )

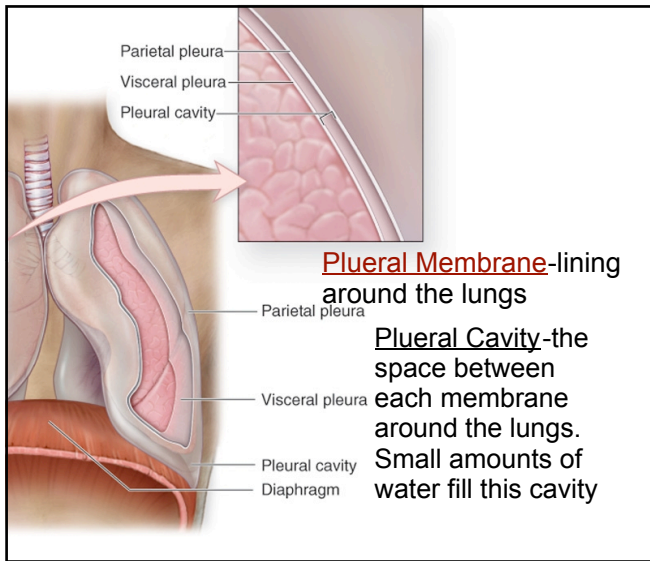
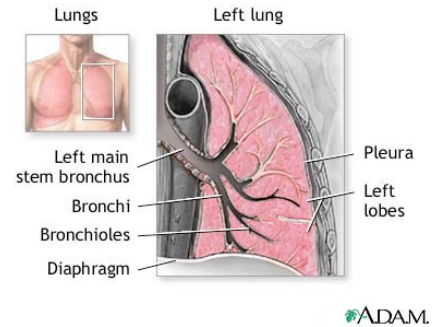
Parts of the respiratory system  
(2 Lungs...important organ)



Bronchus is like an upside down trunk of a tree

Bronchials are bigger branches coming off the trunk

Bronchioles are the tiny twigs on the end of the branches.



## Bell Jar Model

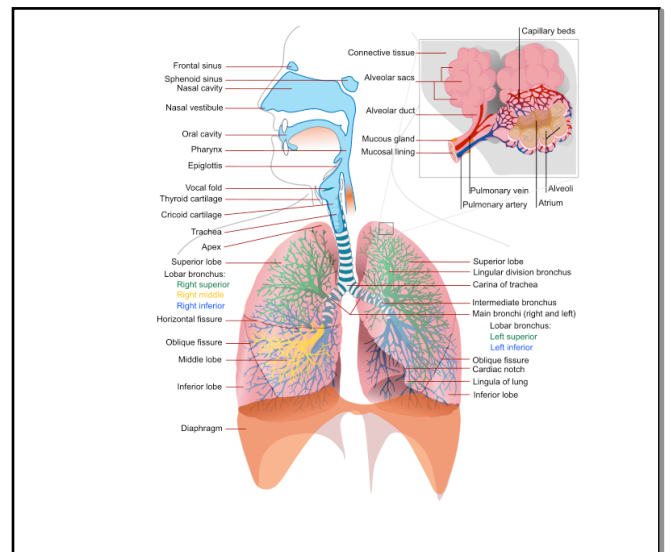
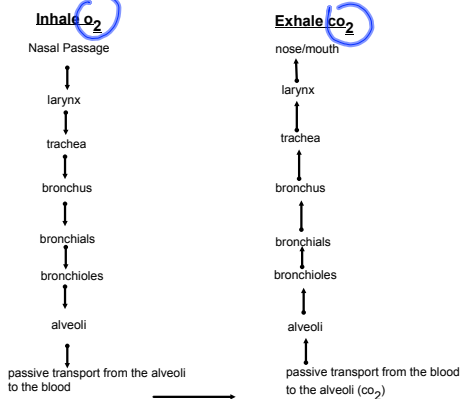
Good

Bad(limitations)

## Syringe Model

## Respiratory System

### Flow Chart



Why do we hiccup?

Why do we burp?

The nose does 3 things to the air as it is inhaled:

vocal cords/Larynx: They stretch to make different pitches

Two lungs: Inside each lung is a tree. The trunk is the bronchus. The branches are the bronchials and the ends are the bronchioles.

Alveoli: sacs on top of the bronchioles. Look like clumps of grapes. This is where the  $O_2$  and  $CO_2$  go through.

If we do not get rid of the  $CO_2$  the poisonous gas will cause you to suffocate.

What part of the brain is in charge of breathing?

Lungs holds up to \_\_\_\_ liters of air.

Inhale \_\_\_\_ go up and out; \_\_\_\_ goes down

Exhale \_\_\_\_ go down; \_\_\_\_ goes up